

# OPERATOR PANEL INSTALLATION DIAGRAM

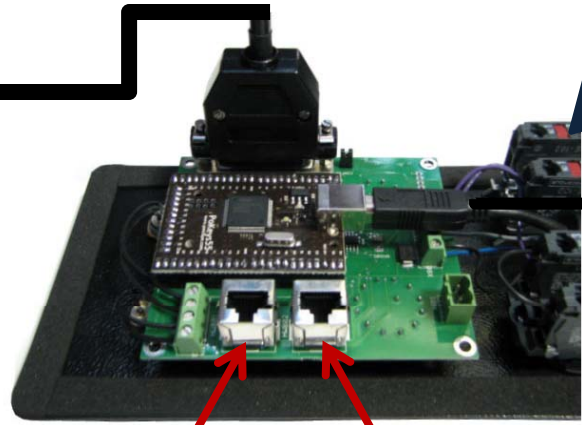
## X15-10-01



Pendant  
X15-20-01

MPG1 and MPG2 are only used for special applications!

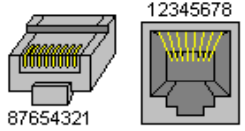
Operator Panel  
X15-10-01



MPG 1      MPG 2

MPG Mod-Jacks	
Pin #	Function
1	A+
2	A-
3	B+
4	+5V DC
5	GND
6	B-
7	Unused
8	Unused

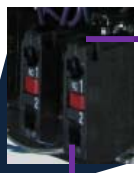
Where is pin #1?



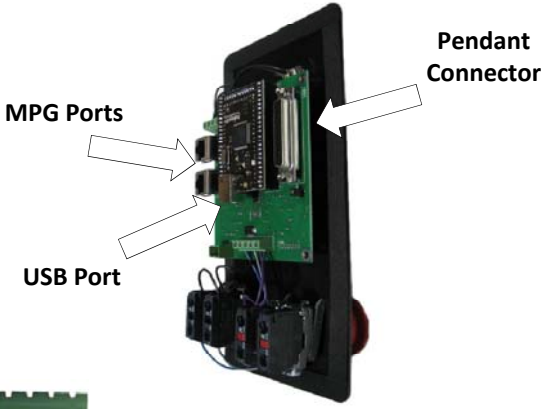
The MPG (Manual Pulse Generator) 1 is an extra MPG input for Mach3. MPG2 is the pendant MPG. MPG2 is used with a motion controller or you can use it as another MPG input if you are not using a pendant.

If your MPGs need more than 100mA, you must supply your own power.

Connect the unused terminal block to the external ESTOP connector on the breakout board.



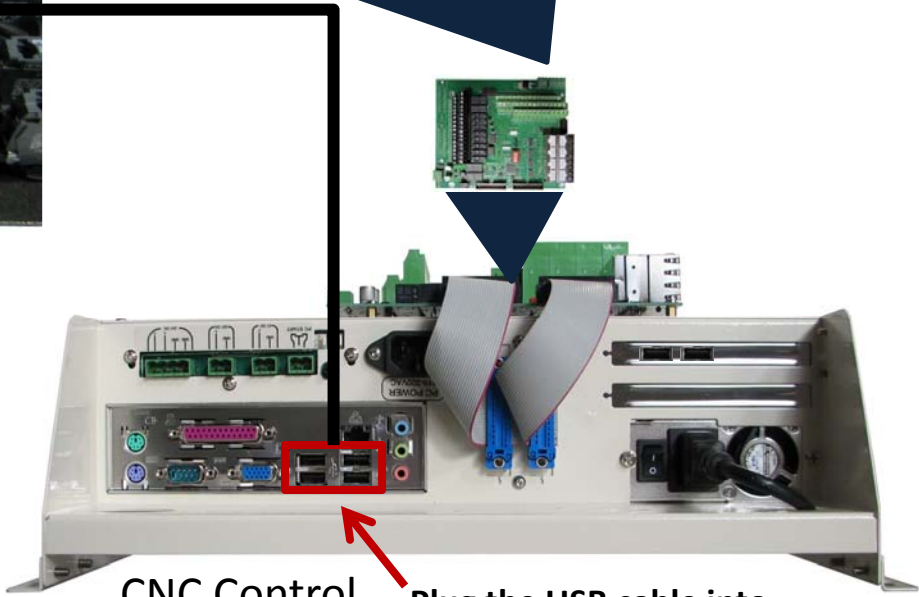
E-Stop Wiring



MPG Ports

Pendant Connector

USB Port



CNC Control

Plug the USB cable into one of these ports.