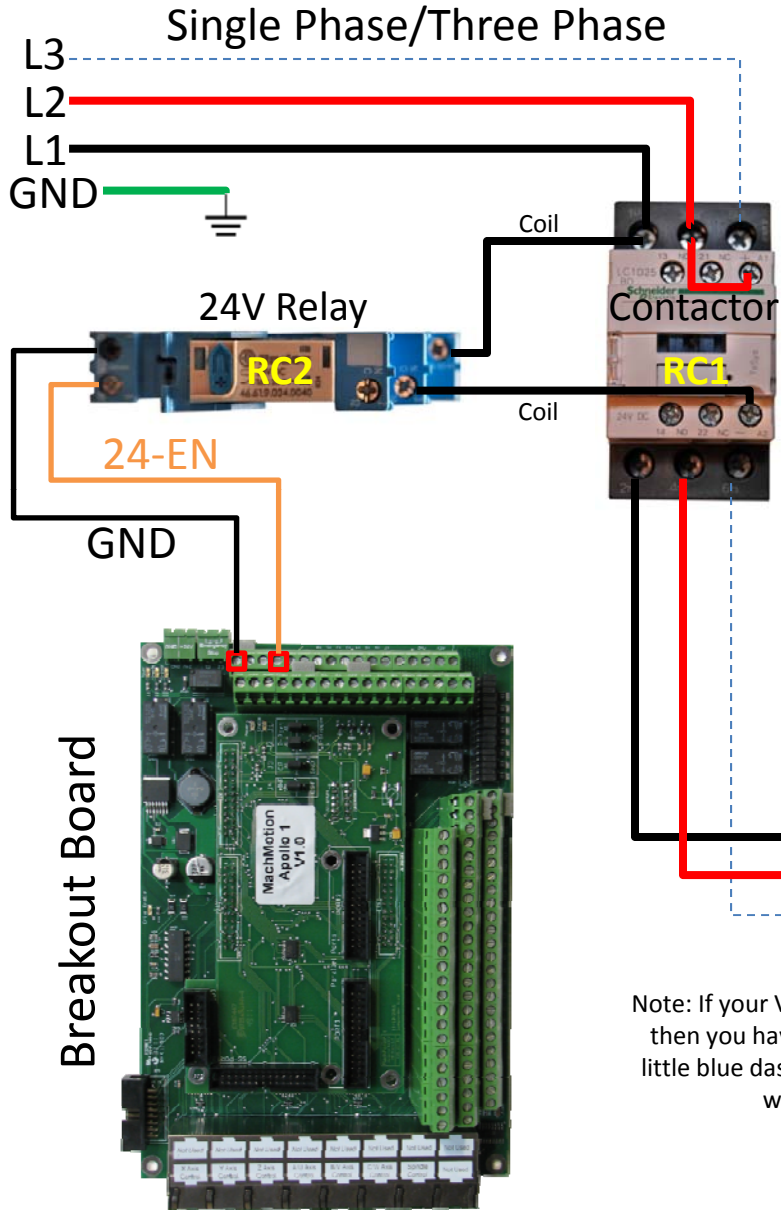


MachMotion
573-368-7399

Component:	Part Number:
24V 16A Relay	24VDC_RY
240VAC 50A Contactor	LC1D50U7



Variable Frequency Drive



Note: You can use the same enable circuit as your drives. However, for a VFD you must use a 50 AMP contactor.

Note: If your spindle goes the wrong direction, swap any two of the spindle motor wires (U,V, or W).

Spindle Motor



Note: If your VFD is greater than 3HP, then you have to use 3 phase. The little blue dashed line shows how to wire 3 phase.

*Enable Circuit: When the machine is enabled, the 24EN signal turns on. This turns on RC2 which connects 230 VAC to the coil of RC1. RC1 turns on the power to the VFD.

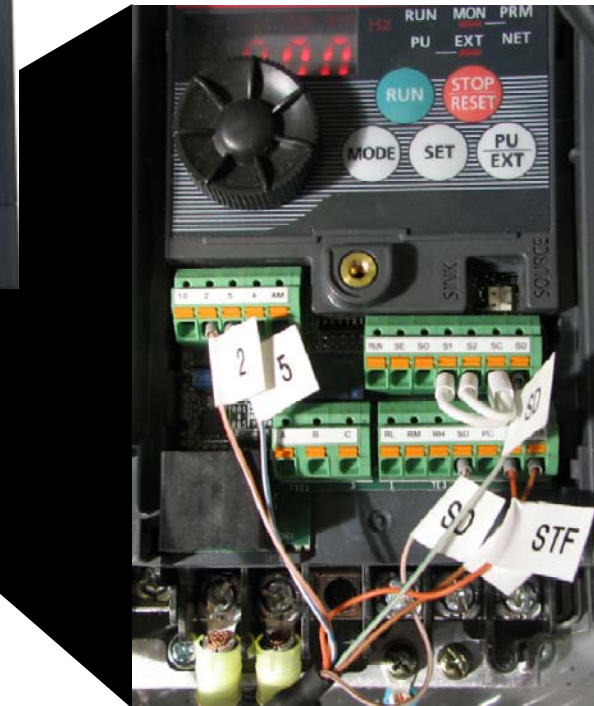
Breakout Board



Variable Frequency Drive



Note: Take off the top panel to connect the Control Cable.



Cat 5 Control Cable

Control Cable

Wire Color	VFD Connection	Function
Orange/White	2	0-10V Analog
Blue/White	5	Analog GND
Green/White	SD	Common
Brown/White	SD	Common
Orange	STF	Forward
Brown	STR	Reverse